



SIPA Bulletin

For Circulation to Members only

Vol. 13 No. 2

March-April 1992

Bimonthly

SOUTH INDIA PHILATELISTS' ASSOCIATION

(Founded 1956)

(Affiliated to the Philatelic Congress of India)

March Meeting Minutes : 20 Members Present

After the usual exchange of the pleasantries, the Meeting was called to order by the President. Minutes of the last Monthly Meeting read and adopted. None of the Members brought anything connected with the letters A to D. Members were given a short resume of the MADUPEX-92 Exhibition (District Level) conducted at Madurai by the Southern Region PMG from 21 to 23 February, 1992. Shri. P. S. Sheshadri who went to Madurai in person was disappointed to find that his INVITEE exhibit on "BIRDS" was not exhibited. Some of the Invitees from SIPA were also not exhibited. No valid reasons were forthcoming from the exhibition Secretariat. Shri K. C. Veeraraghavan also brought to the notice of the Members that only one frame out of the three that he sent was shown. Exhibits not connected with the Themes from Madurai Invitees were shown. In Certificates and Momentos too in the Invitee Section discrimination was shown. Why? The President requested the Invitee Members to put it in writing to the concerned authorities with a copy to the Association. Announcements regarding issue of Stamps, Stationery, Special Cancellation was announced by the President. Janab A. Ravooof brought to the notice of the members that the Minutes of December Meeting, it is reported mistakenly that SDS service was a for a limited period, whereas he had it clarified from Brig. Vrig that the SDS service was and is in use for a number of years among the Armed forces. New members got themselves introduced.

April Meeting Minutes : 24 Members present

Shri G. Madanmohandas, President, occupied the Chair and called the Meeting to Order. New Member Shri S. V. Chetty introduced himself to the members present. Mrs. P. Thomas, a Senior member of SIPA gave a display talk on "EASTER" in four frames connecting the occasion of the 3rd GOOD FRIDAY in April with various minute details regarding the rituals. As Catholics, how the various paintings depicted in the glass panels in the circular domes of the various Apostles, the fasting and feast and the preparations made from the Eggs for sweets etc., were vividly described through stamps. The talk evoked keen interest amongst the members as it was instructive and educative. Members appreciated the painstaking efforts of Mrs. P. Thomas in preparing the "EASTER" Exhibit after much thought & plan.

Our President then introduced the PHILATELIC QUIZ comprising 25 numbers and announced a CASH PRIZE of Rs. 10/- for those members who score 50% and above. Barely 40% Members took in the Quiz. Five or six members answered 6 quiz correctly and the answers to the Quiz was given by our President. Announcements regarding new issues, special cancellations, withdrawals of stamps from the Philatelic counters were announced. He also announced that Special Awards by the P&T Department on the best designed stamp issued during the year 1991 to be sent to Department of Posts, Philatelic Section, Dak Bhavan, Parliament Street, New Delhi. He requested the Members to participate and send the entries with the following particulars before 11.5.1992.

a) Name; b) Address; c) My vote for the best stamp design; d) title of the stamp issue; e) stamp denomination & f) Reasons (in not more than fifty words).

Shri K. C. Veeraraghavan & Shri D.H. Rao brought to the notice of the members the ill-treatment meted out to the SIPA Member Invitees by the Madupex-92, Madurai PMG's Office and wanted the Association to take such action as it deems fit to redeem the injustice by writing to the concerned authorities pinpointing the agony the Invitee Members. Shri D.H. Rao showed some Air envelopes with ship cancellations given to by the naval crew officers of a Russian Ship at Madras. Shri S. Narayanan was thanked for distributing to members Swiss Postal Authorities New Issue of their forthcoming issues. With a hot cup of tea the meeting came to a close.

All communications relating to Bulletin may please be addressed to
Mr. M. T. Karunakaran, Hony. Editor, SIPA Bulletin,
No. 3, Ill Cross Street, Jayanagar, Tambaram Sanatorium, Madras-600 047.

SIPA MEETINGS

SECOND SUNDAY of every month-Regular meeting at the Philatelic Bureau, Anna Road Post Office, Madras 600 002. (10.30 a.m. to 12.30 p.m.)

THIRD SUNDAY of every month-Auction meeting at our Library Hall at 6, Nannian Street, Madras 3. (Timing: 10.45 a.m. to 1 p.m.)

SIPA Library Open Tuesdays & Ill Sunday, 6, Nannian Street, Madras-3

**SPECIAL REGULATIONS FOR THE EVALUATION
OF REVENUE EXHIBITS AT FIP EXHIBITIONS
(SREV)**

(Section within Traditional Philately)

Article 1: Competitive Exhibitions

In accordance with Art. 1.4 of the General Regulations of FIP for the evaluation of Competitive Exhibits at FIP Exhibitions (GREV), these Special Regulations have been drafted to supplement those principles with regard to Revenues. Also refer to Guidelines to Revenue Regulations.

Article 2: Competitive Exhibits

2.1 Competitive Exhibits

A revenue exhibit comprises embossed, imprinted or adhesive tax, fee or credit stamps issued by or under the originating authority of state, municipal or intermediate authority. Such exhibits will display one or more such type of stamp, and where appropriate will explain, and in any event will make suitable reference to, the reasons for and where necessary the regulations relating to the services, transactions or other matter being considered.

2.2 Tax Stamps

Stamps issued for the payment of, or for noting matters relating to, the payment of or exemption from a tax, levy or other fiscal imposition or duty are "tax stamps".

2.3 Fee Stamps

Stamps, the purpose of which is to record payment of or exemption from, a fee for which some service is to be or has been rendered, are "fee stamps".

2.4 Credit Stamps

Stamps issued to denote some monetary or fiscal credit in favour of the purchaser his principal or assignee are "credit stamps".

Article 3: Principles of Exhibit Composition

3.1 A revenue exhibit consists of unused or used embossed, imprinted or adhesive revenue stamps. If used on documents, such documents should be arranged to illustrate clearly the pertinent transactions or services. The exhibit may comprise some of the following.

- 1 Registration of Deeds or Documents
2. General Revenues
3. Judicial or Court
4. Transfers of ownership of movables or immovables
5. Receipts
6. Documentary
7. Public Service
8. Bills
9. Duty Stamps
10. Funds

11. Assurances and policies
12. Consular services
13. Inspections
14. Weights and Measures
15. Licenses
16. Postage stamps used as revenue stamps, or revenue stamps used for postage
17. Other Revenue Stamps

The plan or concept of the exhibit shall be described in an introductory statement (ref. GREV, Art. 3.4)

3.2 A revenue exhibit may contain, where it improves its composition:

1. Essays, proofs of adopted or rejected designs;
2. Legal documents and postal covers if applicable;
3. Varieties of all kinds including watermark, perforation, paper, and printing;
4. Maps, prints, decrees and similar associated materials.

Such items must have direct relation to the fiscal services described in the exhibit (ref GREV, Art 3.4).

Article 4: Criteria for Evaluating Exhibits

(ref: GREV, Art. 4)

"Knowledge" (ref. GREV, Art. 4.5)

A Revenue exhibit may require or admit of more comments and explanation than a comparable postal exhibit but this text must be concise and clear.

Article 5: Judging Exhibits

5.1 Revenue exhibits will be judged by the approved specialists in their respective fields in accordance with Section V (Art. 31-47) of GREX (ref. GREV, 5.1).

5.2 For Revenue exhibits, the following relative terms are presented to lead the jury to a balanced evaluation (ref. GREV 5.2)

Treatment and Importance of the exhibit	30
Knowledge and Research	35
Condition and Rarity	30
Presentation	5

100

Article 6: Concluding Provisions

6.1 In the event of any discrepancies in the text arising from translation, the English text shall prevail.

6.2 These Special Regulations for the Evaluation of Revenue Exhibits at FIP Exhibitions have been approved by the 60th FIP Congress on 25th November 1991 in Tokyo. They come into force on 25th November 1991 and apply to those exhibitions which are granted FIP patronage, auspices or support at the FIP Congress and thereafter.

British Post Office Notices, 1666-1899: Vol. 5, 1850-1859, by Michel M. Raguin, Card covers, 21.5 X 28cm., 460 pp., plastic comb binding. Published by and available from the author at 280 Boston Avenue, Medford, Mass. 02155, U.S.A. at £40 (which includes surface postage).

All serious postal historians will already be aware of this fine series; and will welcome this latest addition to it. For anyone who is unfamiliar with the series, it comprises reprints of all known and surviving PO notices of the stated period. These were the main directives, informing both postal employees and the general public on the day-to-day working of postal systems and affairs; and they contain a mass of information and detail.

Previous volumes 1 to 3 covered the period up to 1839, and volume 4 the period 1840-1849 including the developments following the postal reform, the replacement of mail coaches by the railways, and improvements in foreign mails. The new volume includes 852 Notices, covering the further expansion and great improvement of the Foreign Mail services, the arrangements for mails to the British Forces in the Black Sea, the Crimea, the Baltic and the White Sea areas between 1854 and 1857, and many important changes in the Inland Postal systems.

The author should, again, be congratulated on a number of counts: in particular for making original source material available to those students and collectors who do not live within easy reach of London, or who cannot spare the many hours which would be necessary to attempt to collect the same information from the original archives and libraries. The volumes are well printed, serviceably bound and extensively cross-indexed, and by today's standards are not expensive. The series is probably the most important general reference on British postal history, and access to it is indispensable to any serious student.

DAVID CORNELIUS

Great Britain—Commemorative Labels pre 1950—

A Catalogue by Chris Chatfield 172pp., illustrated, soft bound. Published by Cinderella Stamp Club (Handbook No.8) at £10 + £1 postage from G. M. Dorman, 35 Smith Street, London SW3 4EP, England.

This interesting volume starts with Congress Labels, London 1910 to Bournemouth 1948, and British Industries Fair Labels from 1915-1949 complete the first part of the book. Then follows a Year-by-Year listing from 1846 (Victoria Albert, visit to Scotland), the 1851 International Exhibition, the 1890 London Philatelic Exhibition and the hundreds of others to 1948, many of which we have never seen. In part III are the undated labels, divided into Fairs, Exhibitions and special events, Patriotic and Propaganda Labels, Advertising Labels, Stamp Dealers, Stamp Collectors and Stamp Printers Labels, Stamp Clubs and Association, Charity Labels and a few others. Over 800 different labels are illustrated. Fun for the money.

SIPA BULLETIN

Collect Butterflies and Other Insects on Stamps.

192 pp., limp bound. Published by Stanley Gibbons Publications, Ltd., at £12.95 and postage £2.75. U.K., £5 Overseas.

Collect Butterflies and Other Insects on Stamps is a joint project between Stanley Gibbons Publications and the Butterfly and Moth Stamp Society. The Society's compilers, Albert Coles (Butterflies and Moths) and Timothy Phipps (Other Insects) have been assisted by other members in their efforts to track down and correctly identify the many species which have appeared on stamps. We are all familiar with the fragile beauty of the butterflies and moths but are usually less knowledgeable about the lives of the grasshoppers, bugs, beetles and wasps. It is interesting to note that the less photogenic insects are now beginning to appear, and this new title in the Stanley Gibbons thematic catalogue lists upward of 3500 stamps depicting some 1600 insect species.

In the style followed so successfully by earlier Stanley Gibbons publications, the main body of the book is devoted to a country listing based on Stamps of the World. The country section is followed by species and systematic indexes, itemizing the many insects which have appeared on stamps according to their scientific names, and referring back to the country listing—thus, if your collection is to include only beetles or scorpions, these may be easily identified. Prices are listed for complete sets, or individually where other stamps in the set are not relevant to the theme.

Thematic collectors should find this catalogue of much help and great interest.

London's Postal History Section E Inland Office Cancellation 1844-1868—The Horizontal Diamonds

by Brian Smith. 76pp. Well illustrated, Spirex bound. Published at £5+£1 postage by London Postal History Group, 64 Gordon Road, Carshalton Beeches, Surrey SM5 3RE.

A new volume in this excellent series, amplifying and correcting the pioneer work of the late Leon Dubus. The rarity factor is well done and valuations on covers vary from £1 to £700; on stamps they range from 15p. to £25. Of the single numerals there are 506 illustrations, and of the treble types 49 there are four. Of numbers 50 to 75 there are 79 illustrations, plus three TOO LATE duplex types.

Four pages are used to cross reference the Dubus numbers with those of the LPHG, which are followed by 54 illustrations of types found in the proof books but not included in the catalogue. Six hundred and seventy illustrations for £5 is very reasonable.

An excellent work for the student of London cancellations.

UNFAMILIAR FACES AMID THE NATIONAL PARKS

Did you ever place the 2¢ National Parks stamp depicting the Grand Canyon in a vertical position, turned so that the 2¢ denomination is to the right?

If you do so, as I've done here, and you always thought that the stamp pictured rock formations, do not be surprised if you see very clearly the left-facing profile of Franklin Delano Roosevelt instead.



When viewed in this orientation, some say that the profile of Franklin Delano Roosevelt is discernible in the main rock formation on the 2¢ Grand Canyon stamp

A lot of people believed that, at any rate, in 1934 when the National Parks issue appeared. A favorite philatelic game at that time was to look for something in the design of a stamp that was either hidden or not intended.

Sometimes it took a strong imagination, but many of the discoverers of these visions were sure that they had found something that the United States Post Office Department had never meant to be there.

Politics really entered this little game when the 3¢ National Recovery Act stamp was issued in 1933.

The design pictures four workers marching across the stamp "in a common determination," as the stamp's inscription states.

USPOD announcements identified the worker second from the left as a businessman. Newspapers hostile to the NRA and the president declared that the figure was none other than FDR himself, violating the law forbidding the depiction of living persons on stamps.

Collectors today do not seem to put their magnifiers on new stamps and report new such finds. Perhaps this mania was part and parcel of the Depression, when it was cheaper to study the stamps you had than it was to buy new ones.

Should you wish to play the game that many collectors of U.S. stamps enjoyed more than half a century ago, here are eight of the imaginary objects that collectors at that time thought they saw on their 1934 National Parks stamps.

On the 1¢ Parks stamp depicting Yosemite's El Capitan, the image of a woman (Figure 1 in the illustration) is said to be hidden in the trees, close to the margin, just below the middle of the design.

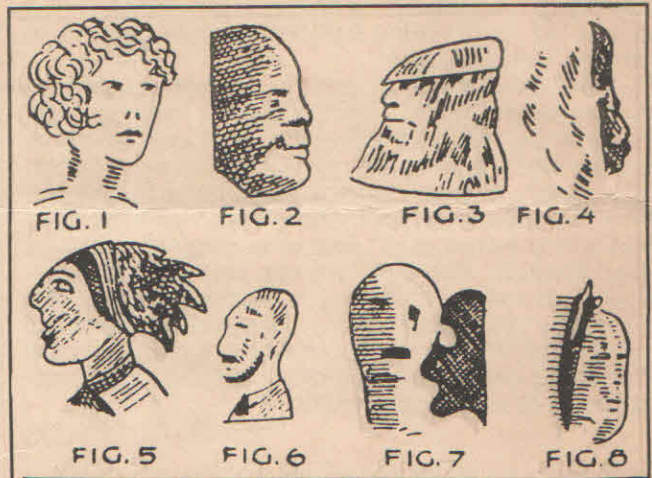
In addition to the profile of FDR already mentioned, the rocks on the 2¢ value seem to conceal two other heads, the second of which looks somewhat like an Eskimo (Figures 2 and 3)

Rotate the 3¢ Mount Rainier stamp 742 so that the denomination is at the bottom, some say, and a monkey like face (Figure 4) is visible in the contour of the mountain toward the topright corner.

Turn the 4¢ Mesa Verde stamp one-eighth to the right so that the top-right corner where the inscription tablet meets the design can be imagined as forming the apex of an irregular diamond. Viewed in this position, looking at the center of the stamp, can you see the Indian with full headdress (Figure 5) formed by the top of the ruins and the back wall of the cliff palace?

Hunt carefully on the 6¢ Crater Lake stamp (745), and, on the bottom margin, you should find the head of a balding gentleman with a conservative beard and moustache (Figure 6).

The 8¢ Zion Park stamp, when viewed conventionally, is said to reveal a full face, with a second head in simple profile visible to the right (Figure 7).

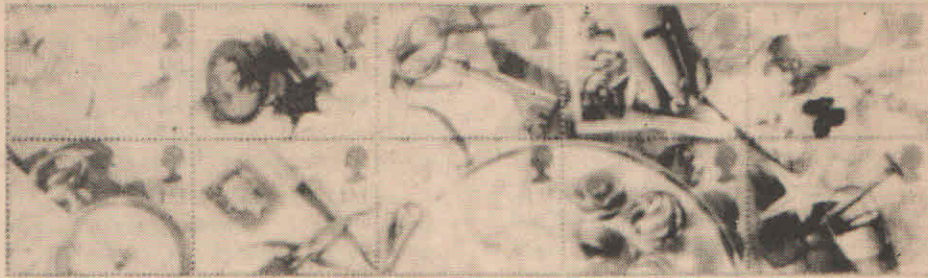


When the National Parks set was issued in 1934, some collectors claimed you could find these hidden portraits on the various stamps. How many of these can you find?

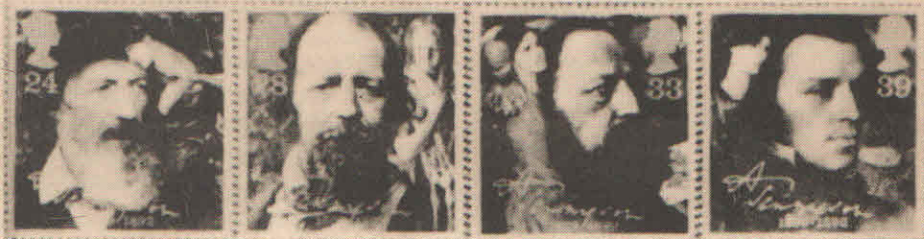
The 9¢ Glacier National Park stamp rotated 90° to the right, shows a head formed by the distant mountain slope. Protruding from behind the prominent mountain in the center of the design, a second head can be seen above the trees at the bottom of the repositioned stamp (Figure 8).

Fun with stamps was what they called this game more than 50 years ago, when many stamp collectors felt that close scrutiny of U.S. issues could reveal more than details of paper, perforations and gum.

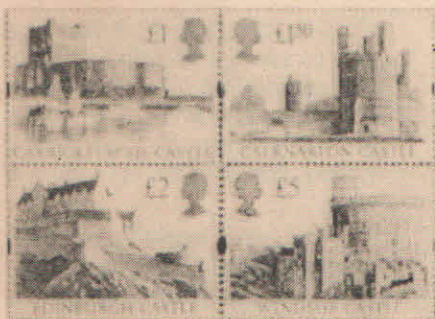
THE ROYAL MAIL



On 28 January, a booklet with a pane of ten first class greeting stamps were issued with the theme **"Memories"**. The background to six stamps is an 1860 letter; the seventh stamp has the corner of the envelope with a penny rose-red, a flower, framed portraits of a brother and sister, a key, a model car, a chronometer, a watch with a programme, a shirt button, a plate bearing a string of pearls and some glass marbles, a spade, a bucket and a star-fish—all memories. These are, in our view, far better greeting stamps than the previous issue.



On 10 March, a set of four values will commemorate the centenary of the death of Alfred, Lord Tennyson. The 24p. shows the poet in 1888 and a scene from the poem "Merlin and Vivien". The 28p. show the poet in 1864 with the Lady of Shalott. The 33p. has a portrait of the poet in 1868 with "The Miller's Daughter". The 39p. shows Samuel Lawrence's portrait of Tennyson as a young man, superimposed on the painting "Marianna" by Dante Gabriel Rossetti, which depicts a scene from Tennyson's poem.



On 24 March, four new high values were issued, each showing a castle based on photographs taken by H.R.H. the Duke of York. The four values are £1 Carrickfergus Castle, £1.50 Caernafon Castle, £2 Edinburgh Castle and £5 Windsor Castle. A new security ink has been used, hitherto only used on certain high value foreign bank notes. By using this ink, the Queen's head changes colour from gold to green under different light conditions, making forgery prohibitively difficult. The new stamps feature a change in perforation pattern, and on each vertical side there is a single elongated perforation measuring just under 4mm. The stamps are printed by Harrison & Sons in sheet of 100.

On 11 February, two new stamp rolls were issued, 500x33p. for £165, and 500x39p. for £195. These are trials to test the market. Five stamps will be issued on 7 April called "Europe '92", with a theme highlighting Spain, where the 1992 Olympics will be held. Two 24p are printed se-tenant, one with the British Olympic Association logo, the other with the flying torch symbol of the British Paralympic Association.

Another 24p stamp marks the 500th anniversary of Columbus Landfall in the Caribbean and shows the Santa Maria in which Columbus crossed the Atlantic. The companion 39p features Kaisei, the sail-training ship sponsored Operation Raleigh whose young British crew will follow the explorer's route in an event called Grand Regatta Columbus '92. The other 39p commemorates the Expo '92 held at Seville, and shows the British pavilion designed for the Wembley Exhibition of 1924-25.

In pursuit of learning

ACQUIRING knowledge is not a difficult task confined only to great scholars. It is an earnest examination of ordinary things. Young minds must not always accept what other preach or write, unless and until they are convinced. It not always interesting to know the why and how of things? Does it not arouse enthusiasm? Yes. Any interesting and enthusiastic follow up on a piece of information results in unconscious learning. It is a playway method in short, fact-finding sans teacher, sans class room and sans syllabi, develops one's personality which is the sole aim of education.

Here is an example. Under the heading "Fact-finder" in the Young World, Dec. 14, 1991, there was an interesting item about "The first post box". How many of you had imagined how the shoe-shaped post-box would look like? How does the old tree still stand

even after five centuries? and so on. Surely, some might have even dreamt of visiting Mossel Bay.

On going through that item out

of curiosity, this writer wanted more information about the post-box and related stories and a picture of it from any edition of encyclopaedia. Indeed, more interesting stories surfaced about maritime expeditions, navigators and their patron kings. But the curiosity to see the picture of the strange post box did not die. Why not the postmaster at Mossel Bay be contacted? If I do so will he reply? What is his address? I started on my search.

With the help of a good atlas, I was able to locate where Mossel Bay is situated. It is in Cape Province in the Republic of South Africa. I took a xerox copy of the newspaper item, enclosed it along with a letter extending my greetings, requesting the postmaster to send me a picture of the postbox in his town.

It is said that the world is one family. Yes, it is true! Promptly the kind hearted postmaster at Mossel Bay, Mr. A. B. Stander, took pains to send me the picture you see here. What a thrilling way to make a new friend. We had not met before, nor had we signed any accord of historical importance! I am a school master in India and he is a postmaster in South Africa. That is all. But the strategy worked. The flower of universal understanding bloomed.

Here, you see a regular post box made of concrete, but in an unusual shape like that of a Portugese shoe. This reminds us of the original shoe which was supposed to be the world's first post-box and contained a letter written by the captain of the only surviving ship. The story goes that King John II of Portugal sent a fleet of 12 ships to India under the captaincy of 'Bartholomew Dias'. When circumnavigating the Cape of Good Hope, the fleet was caught in a storm. Except one, all other ships sank.

The picture also shows the 500-year tree on which the shoe was hung. The statue of Bartholomew Dias whose death was recorded in that letter is also seen. On the reverse side of the picture card there is a special postal cancellation over the stamp, depicting the tree with its branches and the name of the tree written as "old post office tree". This suggests that the tree in this picture was the world's first post office.

I did not stop with that. I wanted to read what is written in the tablet placed under the tree. I took out a magnifying glass and read it. It reads as follows: "Post Office Tree—So far back as AD 1500

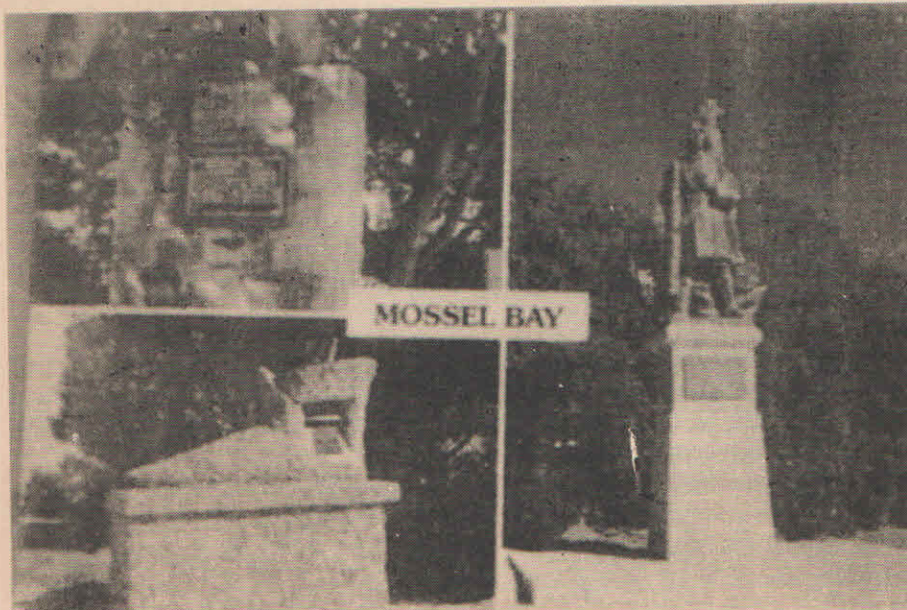
Pedro da Alvares placed in this tree, a letter containing a record of a disaster to a Portugese fleet en route for India. This letter was found by Joao da Nova who built a heritage within few yards of the tree, close to which was a spring of water."

The same matter is written in another European language in the upper tablet. There is also some writing close to the mouth of the post box. The letters are too small to be deciphered.

Thus, it shows that perseverance pays. Acquiring knowledge is knowing more about any interesting piece of information Not under pressure but with pleasure. This is a kind of informal learning, stronger than the traditional way.

P. Solomon Dhanaraj

Courtesy: The Hindu
MARCH - APRIL '92



STAMP NEWS : 3

I. NEW ISSUES

1. INTERNATIONAL ASSOCIATION FOR BRIDGE AND STRUCTURAL ENGINEERING:

The IABSE is an apex international body with its membership spread over about 80 countries, representing engineering organisations, construction firms, public administrations, universities and research establishments. It was founded in 1929 to promote co-operation in the field of structural engineering and Delhi is hosting the 14th Congress of this organisation in March 1992. Date of release: 1-3-92 Den: 200p & 200p (se-tenant)

2. V INTERNATIONAL CONFERENCE ON GOATS:

The Goat, numerically is the most important species of livestock in developing countries, especially in Asia and Africa. Goats provide subsistence to a large percentage of small holders and landless poor and marketable commodities such as meat, milk, fibre and manure. The V International Conference on Goats is being organised in New Delhi in March, 1992. D.O.R. 2.3.92; Den. Rs.6/-

3. NATIONAL ARCHIVES:

Established at Calcutta in 1891 as the Imperial Record Department, the National Archives is now 100 years old. The total holdings of the National Archives comprises approximately 30,00,000 files, volumes, maps etc. covering about 30 kms of shelf space. The oldest document preserved is of 1352 A.D.

Date of release: 11.3.92; Den. 500p

II. WITHDRAWALS

The following stamps will be withdrawn from sale from all philatelic bureaux/counters with effect from 31st of March '92 on completion of their sales for six months through PBs:

1. Jayshankar Prasad - Mahadevi Varma
2. 37th Commonwealth Parliamentary Conference.
3. Greetings.

III. SPECIAL CANCELLATIONS/SPECIAL COVERS

1. A special cancellation was provided on 29.2.92 on the occasion of Jalsaghar Music Festival at Calcutta.
2. A special cancellation will be provided on 3.3.92 on the occasion of the centenary celebration of the Byram Jeejeeboy Parsee Charitable Institute and College, at Bombay-400 001.
3. A special cancellation will be provided from 3.3.92 to 5.3.92 at Jaipur on the occasion of ENVIPEX-92.
4. A special cancellation will be provided on 30.3.92 at Bombay-400 001 on the occasion of the Centenary of the Tansa Dam.

Note: Whenever special covers are brought out along with special cancellations, 200 such covers are sold from the Phil. Bureaux where the cancellation is provided at the price fixed by Department for this purpose.

IV POSTAL STATIONERY

New ILCs with the "Ship Motif" and bearing an advertisement of "Malaria Eradication" designed and printed at the Madras Security Printers, Madras will be released for sale from 14.3.92. First day cancellation will be provided at all Philatelic Bureaux.

STAMP NEWS: 4

1 VIJAY SINGH PATHIK

Born in 1882 in the Bulandshahar district of Uttar Pradesh, Pathik started a campaign of Satyagrah against the oppression by the rulers of Mewar. He also initiated a number of schemes to enable the Bhils to lead a better social and economic life, free from the curses of old customs and practices. He also fought for the equality of women and was a prolific writer of great distinction. DenL100p

2. ADVENTURE SPORTS

Adventure Sports is a new phenomenon that has been catching on all over the world in recent years and India with its rich natural resources has been in the forefront. We have some of the best natural sites for engaging in these activities. With a view to projecting these a set of 4 stamps is being brought out depicting: (i) Hang gliding (ii) wind surfing (iii) river rafting and (iv) skiing. Rs. 200; 400; 500; 1100.

3. KRUSHNA CHANDRA GAJAPATHY

The former Maharaja of Parlakhemundi, he dedicated his life to the unification of Orissa and amalgamation of the Oriya speaking tracts distributed over four provinces for around three centuries. He was also the founder of various educational institutions in Orissa and was a philanthropist who established a number of scholarships and spent from his treasury for the cause of Orissa and its development. Den. Rs. 100.

4. NATIONAL ARCHIVES

The stamp on National Archives will now be released on 20.4.92. Den. Rs. 600

II. SPECIAL CANCELLATIONS & SPECIAL COVERS

1. A special cancellation will be provided in Calcutta on 4.4.92 on the occasion of the Old City Charter Celebrations of the Rotary Club of Calcutta.
2. A special cancellation will be provided at Thiruvananthapuram - 695 001 on 20.4.92 on

the occasion of the Golden Jubilee Celebrations of the Swati Tirunal Sangeet Sabha. Blank covers will be sold for Re. 1/- each. The sponsors of this cancellation are the Sri. Swati Tirunal Sangeet Sabha, Fort, Thiruvananthapuram - 695 023.

3. A special cancellation will be provided at Bangalore on 30.4.92 on the occasion of the birth anniversary celebrations of Babuji Maharaj.

III. APS CANCELLATIONS/COVERS

(i) 12 Engineer Regiment - Silver Jubilee - 26.4.92., (ii) HQ Northern Command - NORTH-COMPEX-30.4.92.

IV. POSTAL STATIONERY

New ILCS with the "Ship Motif" and bearing an advertisement of "Adult Education" printed at the Calcutta Security Printers, Kanpur will be released for sale from 25.4.92 in nine languages. First day cancellation will be provided at all philatelic bureaux.

V WITHDRAWALS

The following stamps will be withdrawn from sale from all Philatelic Bureaux/Counters with effect from 30th of April, 1992 on completion of their sales for 6 months from PBs/Counters.

(i) Orchids (ii) 2nd Battalion-3rd Gorkha rifles (iii) Kamala Devi Chattopadhyaya

SOUTH AFRICA issue three values on 6 February promoting environmental conservation. On 1 April *Bophuthatswana* issued a dramatic set of Easter Stamps showing Christ and his Roman persecutors. *Transkei* issued a set of four values on 20 February showing flowering orchids; on 1 April, they issued the seventh set of four heroes of medicine—Thomas Weller, Ignaz Semmelweis, Sir James Simpson and Rene Laennec. *Namibia* celebrated the 21st anniversary of the Conservatoire at Windhoek with a set of four, which convey the message clearly; on 16 April, a set of four stamps show different freshwater fish—the Blue Kinpin, the Yellow Fish, the Carp and the Sharptooth Catfish; anglers will be pleased.

